

Government of Alberta

NORTHERN ALBERTA JUBILEE AUDITORIUM
 11455 - 87th Avenue NW, Edmonton, Alberta, T6G 2T2
 Phone (780) 427-2760 Fax (780) 422-3750
 www.jubileeauditorium.com

SIDLIGHT & BOX BOOMS

Plan View

File: Lx-Sidelight-and-Booms

Date: September 19, 2023

Scale: 1/4" = 1'

Sheet # **6**

Dn. by T.Williamson & K.Humphrey
 NAJA.Tech@jubileeauditorium.com

INSTRUMENT KEY	53 Circuit # 155 Dimmer # Colour	BEAM IN DEGREES		Gobo Size
		Narrow	Wide	
	1000 Watt Selecon Pacific Zoom	23	50	A
	1000 Watt Selecon Pacific Zoom	14	35	B
	1000 Watt Selecon Pacific Zoom	12	28	M
	1000 Watt Selecon Pacific Zoom	5.5	13	M
	Martin MAC700 Spot	16	31°	
	Chauvet Reve 3 LED Lekos From top to bottom: 19deg, 26deg, 36deg, 50deg			
	Amb = R22 or R321 Red = R26			

Orchestra Pit Lift Apron Prosc. Stage Floor

STAGE RIGHT

Government of Alberta

NORTHERN ALBERTA JUBILEE AUDITORIUM
 11455 - 87th Avenue NW, Edmonton, Alberta, T6G 2T2
 Phone (780) 427-2760 Fax (780) 422-3750
 www.jubileeauditorium.com

SIDLIGHT & BOX BOOMS

Plan View

File: Lx-Sidelight-and-Booms

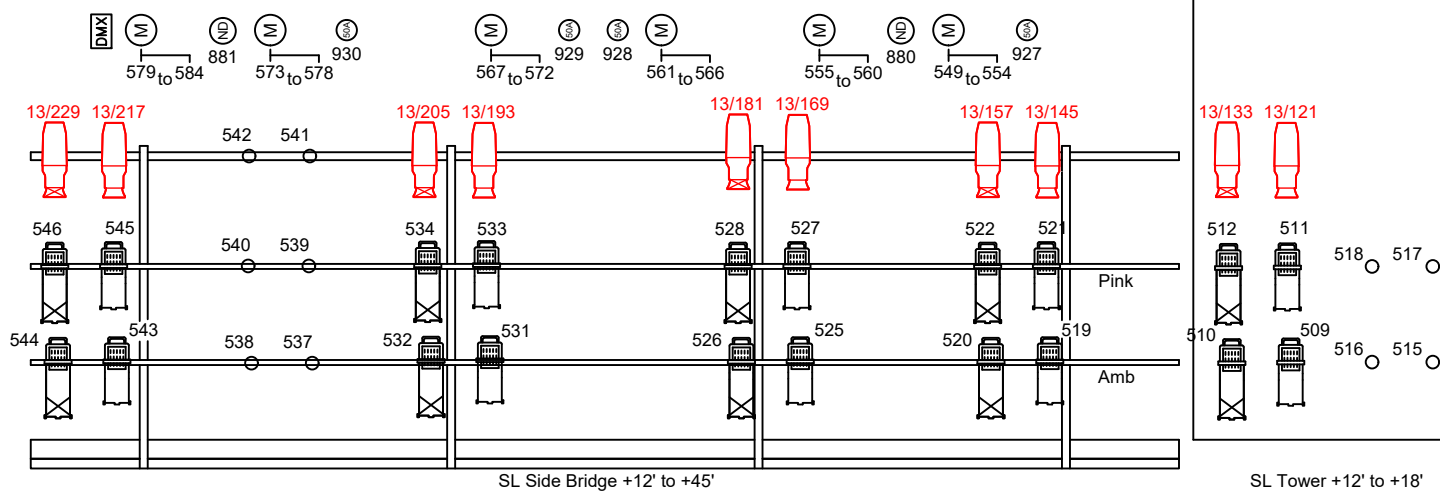
Date: September 19, 2023

Scale: 1/4" = 1'

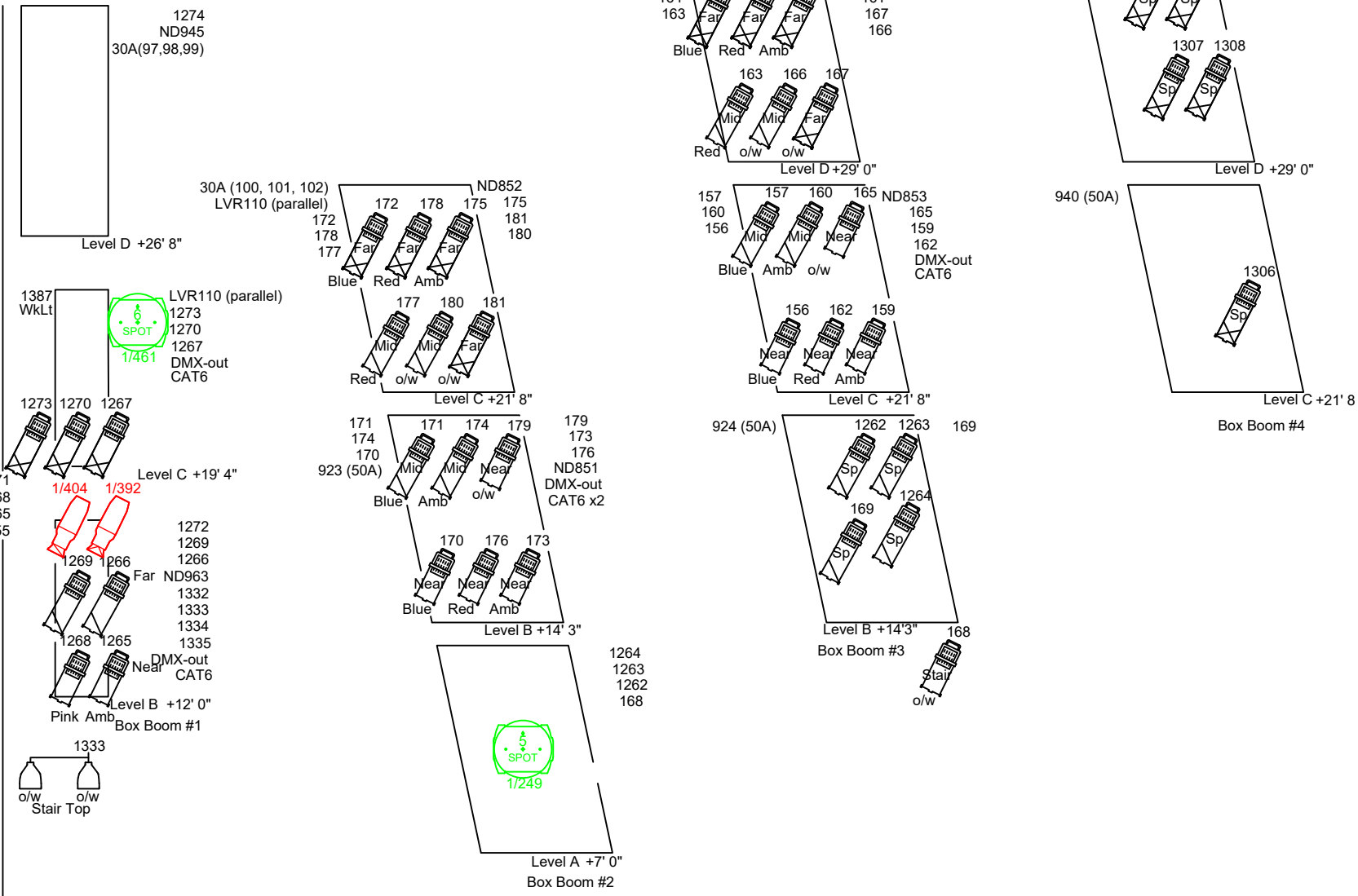
Sheet# **6**

NORTHERN ALBERTA JUBILEE AUDITORIUM

Dn. by T.Williamson & K.Humphrey
 NAJA.Tech@jubileeauditorium.com



STAGE LEFT



Stage Floor Prosc. Apron Orchestra Pit Lift