

720 10: 450 719 10: 400 718 10: 350 717 10: 300 716 10: 250 715 10: 200 714 10: 150 713 10: 100 712 10: 050 711 10: 001

LX 8 38'-6" from Smoke Pocket

LX 7

LX 6 32'-6" from Smoke Pocket

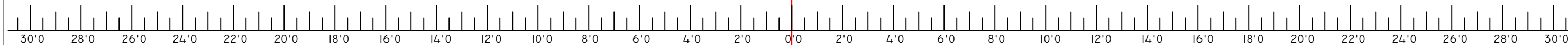
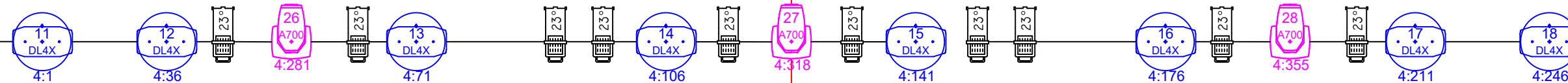
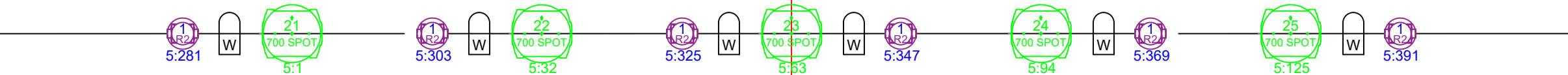
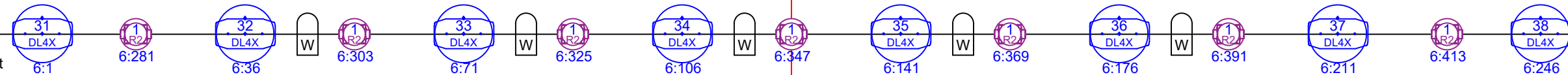
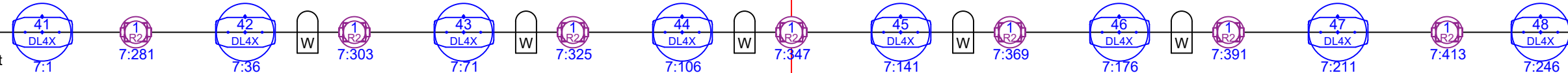
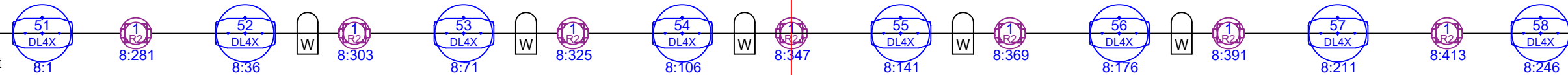
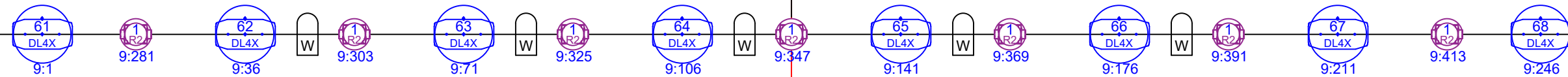
LX 5 25'-2" from Smoke Pocket

LX 4 17'-10" from Smoke Pocket

LX 3 11'-6" from Smoke Pocket

LX 2 6'-7" from Smoke Pocket

LX 1 5'-3" from Smoke Pocket



Northern Alberta Jubilee Auditorium  
Overhead Stock Lighting Rig  
Edmonton, Alberta

Robe DL4X Spot	Rogue R2 Wash	MAC 700 Profile	Clay Paky Alpha Profile 700	1K MFL PAR	Selecon 23-50 Zoom

Northern Alberta Jubilee Auditorium (Edmonton) Onstage Moving Light Quick Reference (Sept 2018)

<b>L</b>	(61)	(161)	(62)	(162)	(63)	(163)	(64)	(164)	(65)	(165)	(66)	(166)	(67)	(167)	(68)
<b>X</b>	DL4X	R2 Wash	DL4X	R2 Wash	DL4X	R2 Wash	DL4X	R2 Wash	DL4X	R2 Wash	DL4X	R2 Wash	DL4X	R2 Wash	DL4X
<b>6</b>	DMX 1	DMX 281	DMX 36	DMX 303	DMX 71	DMX 325	DMX 106	DMX 347	DMX 141	DMX 369	DMX 176	DMX 391	DMX 211	DMX 413	DMX 246

<b>L</b>	(51)	(151)	(52)	(152)	(53)	(153)	(54)	(154)	(55)	(155)	(56)	(156)	(57)	(157)	(58)
<b>X</b>	DL4X	R2 Wash	DL4X	R2 Wash	DL4X	R2 Wash	DL4X	R2 Wash	DL4X	R2 Wash	DL4X	R2 Wash	DL4X	R2 Wash	DL4X
<b>5</b>	DMX 1	DMX 281	DMX 36	DMX 303	DMX 71	DMX 325	DMX 106	DMX 347	DMX 141	DMX 369	DMX 176	DMX 391	DMX 211	DMX 413	DMX 246

<b>L</b>	(41)	(141)	(42)	(142)	(43)	(143)	(44)	(144)	(45)	(145)	(46)	(146)	(47)	(147)	(48)
<b>X</b>	DL4X	R2 Wash	DL4X	R2 Wash	DL4X	R2 Wash	DL4X	R2 Wash	DL4X	R2 Wash	DL4X	R2 Wash	DL4X	R2 Wash	DL4X
<b>4</b>	DMX 1	DMX 281	DMX 36	DMX 303	DMX 71	DMX 325	DMX 106	DMX 347	DMX 141	DMX 369	DMX 176	DMX 391	DMX 211	DMX 413	DMX 246

<b>L</b>	(31)	(131)	(32)	(132)	(33)	(133)	(34)	(134)	(35)	(135)	(36)	(136)	(37)	(137)	(38)
<b>X</b>	DL4X	R2 Wash	DL4X	R2 Wash	DL4X	R2 Wash	DL4X	R2 Wash	DL4X	R2 Wash	DL4X	R2 Wash	DL4X	R2 Wash	DL4X
<b>3</b>	DMX 1	DMX 281	DMX 36	DMX 303	DMX 71	DMX 325	DMX 106	DMX 347	DMX 141	DMX 369	DMX 176	DMX 391	DMX 211	DMX 413	DMX 246

<b>L</b>	(121)	(21)	(122)	(22)	(123)	(23)	(124)	(24)	(125)	(25)	(126)
<b>X</b>	R2 Wash	MAC700P	R2 Wash	MAC700P	R2 Wash	MAC700P	R2 Wash	MAC700P	R2 Wash	MAC700P	R2 Wash
<b>2</b>	DMX 281	DMX 1	DMX 303	DMX 32	DMX 325	DMX 63	DMX 347	DMX 94	DMX 369	DMX 125	DMX 391

<b>L</b>	(11)	(12)	(26)	(13)	(14)	(27)	(15)	(16)	(28)	(17)	(18)
<b>X</b>	DL4X	DL4X	Alpha 700	DL4X	DL4X	Alpha 700	DL4X	DL4X	Alpha 700	DL4X	DL4X
<b>1</b>	DMX 1	DMX 36	DMX 281	DMX 71	DMX 106	DMX 318	DMX 141	DMX 176	DMX 355	DMX 211	DMX 246

Each row is a separate universe

Robe Robin DL4X Spot in Mode 1 (35 channel)  
 Martin MAC700 Profile in 16ex (31 channel)  
 Clay Paky Alpha Profile 700 in Standard (37 channel)  
 Chauvet Rouge R2 Wash in 22 channel mode